

World Leader in Sophisticated Packaging Systems**MS20** Manual Side Drive**series overview**

The BestPack® MS20 Semi-Automatic Uniform Carton Sealer is our most popular top of the line operator-fed and adjustable carton sealing machine, designed to cater to the needs of light-to-heavy duty uniform bottom carton closure applications.

All systems incorporate our exclusive pop out pressure sensitive "High Speed" tape heads with patented tab adjustment.

major features

- Two Side Belts
- Adjustable Bed Height 24.6" to 30.75"
- Width Adjustment either side of machine
- Tape Roll Lengths: 1000 yd., 1500 yd., 2000 yd.
- Heavy Duty Frame
- UL Approved Electrical Parts
- Designed for uniform applications Capable of Interchanging 2" or 3" Tape Heads
- Electrical on/off box can be mounted on either side of machine

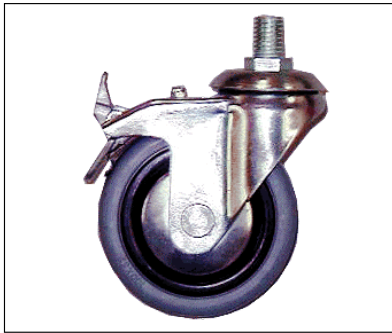
standard features

- Exclusive Pop-out pressure sensitive "high speed" tape head with patented tab adjustment and noise reduction arm
- Operation Manual

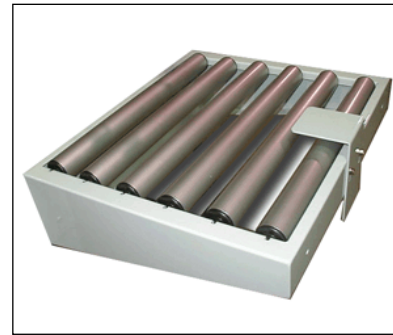
World Leader in Sophisticated Packaging Systems

optional features

- Spare Parts Kit
- High Speed Motor Upgrade (Up to 125 ft./mm.)
- Motorized Height and/or Width Adjustment
- Interlock Safety Gates
- Stainless Steel



Locking Castors



Infeed/Exit Conveyor w/ Stabilizer

machine & carton specifications

- Power Requirements: 110 Volts 60 Hz
- Speed: Up to 40 cartons/minute
- Tape Head: Standard: 2", Available: 3"
- Shipping Weight: 342 - 550 lbs

series comparison table

| Model | Machine Size | Carton Range | Cartons/Min. | Shipping Weight (lbs.) |
|-------------------------|-----------------------|-------------------------------|--------------|------------------------|
| MS 20-2 2" Tape Head | 39.4" x 28.5" x 35.0" | (6.0"-U) x (4.25"** - 20.25") | Up to 40 | 263 |
| MS 20-3 3" Tape Head | 39.4" x 28.5" x 35.0" | (6.0"-U) x (5.25" - 20.25") | Up to 40 | 263 |

**With skid plates